



This deceptively spacious end townhouse is ideally located in a quiet cul de sac location between the Ravenhill and Beersbridge Road, with a variety of shops, restaurants and public transport only a short stroll away.

Modernised throughout, the bright and airy accommodation comprises of lounge, kitchen open plan to dining area, and three bedrooms. The property also benefits from a first floor shower room and ground floor WC.

Externally there is an enclosed full paved rear garden area, ideal for social gatherings. This is the perfect house for first time buyers or investors.

Offers Over
£132,500

3 Maghies Place,
BELFAST,
BT6 8HF

Viewing by
appointment with
& through agent
028 9065 0000

- End townhouse in quiet cul de sac location
- Bright and airy modern finish throughout
- Lounge with laminate flooring
- Modern kitchen open plan to dining area
- Three bedrooms
- Shower room/Ground floor WC
- Gas central heating/uPVC Double Glazing
- Enclosed paviour rear garden
- Excellent storage space
- Close to shops, schools and public transport



The Property Comprises:

Ground Floor

COVERED PORCH: uPVC glazed front door to . . .

ENTRANCE HALL: Laminate wood effect floor.

LOUNGE: 13' 6" x 11' 6" (4.11m x 3.51m)
Laminate wood effect floor.

KITCHEN: 17' 8" x 11' 5" (5.38m x 3.48m)
Modern fitted kitchen with range of high and low level units, integrated electric oven with four ring electric hob, 1.5 bowl sink unit, plumbed for washing machine, tiled floor, centre island with breakfast bar area, integrated fridge freezer, storage cupboard.

REAR HALLWAY: uPVC glazed door to rear, tiled floor.

CLOAKROOM: White suite comprising low flush wc, pedestal wash hand basin, tiled floor.



First Floor

LANDING: Access to roofspace, built-in storage cupboard with gas fired boiler.

BEDROOM (1): 11' 6" x 10' 4" (3.51m x 3.15m) Laminate wood effect floor.

BEDROOM (2): 11' 5" x 9' 10" (3.48m x 3m) Laminate wood effect floor.

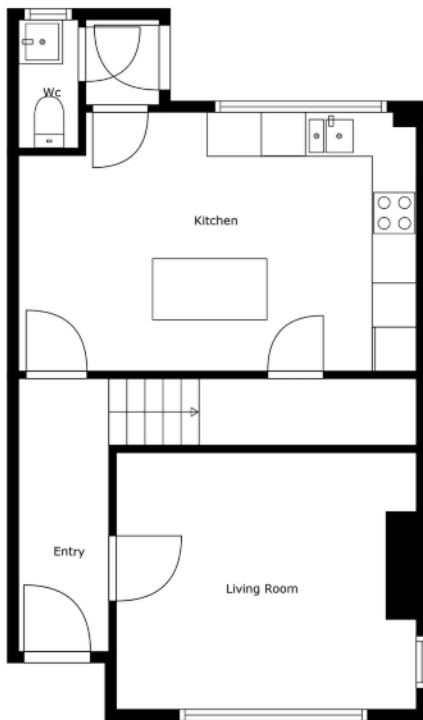
BEDROOM (3): 8' 9" x 7' 3" (2.67m x 2.21m) Laminate wood effect floor.

SHOWER ROOM: White suite comprising low flush wc, vanity sink unit, walk-in shower with thermostatic telephone hand shower and rain head, floating wc, part tiled walls, tiled floor.

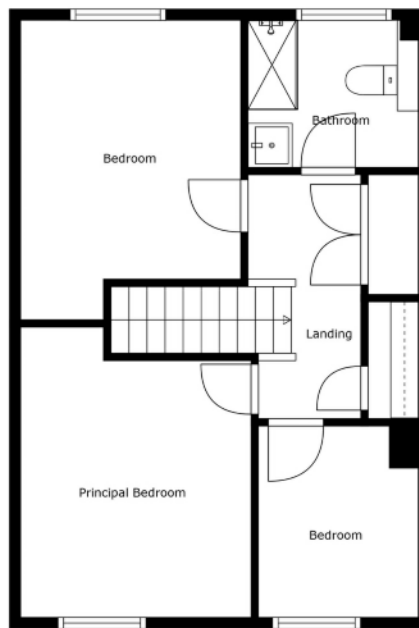


Location:

Heading out of town on the Ravenhill Road, turn left onto My Lady's Road, then left onto Pearl St. Maghies Place is first on the right.



Floor 1

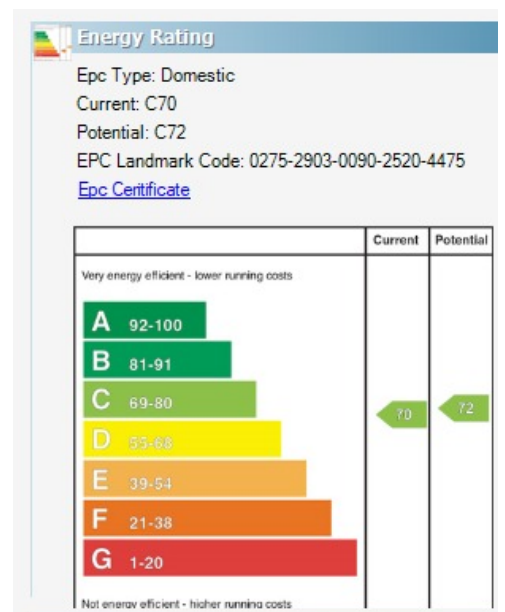


Floor 2

Sizes And Dimensions Are Approximate. Actual May Vary.

Ballyhackamore - 028 90 65 0000
 Lisburn Road - 028 90 66 3030
 North Down - 028 90 42 4747
 Lisburn - 028 92 66 1700

www.templetonrobinson.com



These particulars do not constitute any part of an offer or contract. None of the statements contained in these particulars are to be relied on as statements or representations of fact and intending purchasers must satisfy themselves by inspection or otherwise to the correctness of each of the statements contained in these particulars. The Vendor does not make or give, neither Templeton Robinson, nor any person in its employment has any authority to make or give, any representation or warranty whatever in relation to this property. All dimensions are taken to nearest 3 inches.

