

62 TULLYHUBBERT ROAD,  
BALLYGOWAN, COMBER, BT23 6LY



TEMPLETON  
ROBINSON



PRICE: OFFERS AROUND £875,000

Tullybloom Estate, located at 62 Tullyhubbert Road, offers a unique opportunity to purchase a 13-acre property just 15 minutes from Belfast. Situated at one of the highest points in North Down, it boasts 360-degree views of the Mourne Mountains and Strangford Lough. Enjoy private walks and a personal woodland/nature trail through the scenic countryside. The estate features stables and paddock for equestrian enthusiasts, newly installed fiber-optic WiFi, CCTV, and a high-quality alarm system. Perfect for entertaining, it includes a cinema, games room, and a fully equipped bar.

On entering the property one is immediately struck by space and standard of finish whilst further investigation reveals four good sized reception rooms which have plenty of options to adapt to working from home whilst five double bedrooms will ensue this fine home offers the space, comfort and well proportioned accommodation for today's busy modern family.

Externally the property itself is set in approximately an acre of well tended private mature gardens with an additional 12.5 acres of surrounding fields suitable for a variety of uses not least those with equestrian interests. The large double garage with playroom above provides further flexible living. Rural location yet within easy reach of Belfast, Ballygowan, Comber and Carryduff.





- Fabulous Detached Family Home Set Within Approximately 13 Acres

- 
- 4 Large Reception Rooms with Views Over Rolling Countryside
  - Games Room with Entertaining Amenities
  - Modern Fitted Kitchen with Casual Dining Area
  - Utility Room & Separate Study

- 
- 5 Double Bedrooms, 3 with Ensuite Shower Rooms
  - Main Bathroom
  - Downstairs Cloaks with WC
  - Oil Fired Central Heating/uPVC Double Glazed

- 
- Double Garage with Games Room Above, Potential for Annex Subject to Planning
  - Formal Gardens, Paved Patios & Ample Parking.
  - 2 Stables & Tack Room





THE PROPERTY COMPRISES:

## GROUND FLOOR

Double doors to . . .

TILED ENTRANCE PORCH:

ENTRANCE HALL: Double doors to . . .

FAMILY ROOM: 23' 5" x 21' 3" (7.14m x 6.48m) (into bay). Exposed brick walls, inglenook style fireplace with cast iron fire with gas inset, cornice ceiling, ceiling rose, polished pine floor, window seating. Double doors from hall to . . .

MODERN FULLY FITTED KITCHEN OPEN PLAN TO CASUAL DINING: 25' 0" x 15' 5" (7.62m x 4.7m) Excellent range of high and low level units, polished granite worktops, Belfast sink unit with Quooker boiling water tap, wine chiller, built-in oven and integrated microwave, five ring gas hob with stainless steel extractor fan, built-in dishwasher. Kitchen island with granite worktop, range of built-in low level units, breakfast bar, ceramic tiled floor, uPVC double glazed patio doors to patio. Open plan to . . .

LIVING 15' 8" x 11' 8" (4.78m x 3.56m) Bi-folding feature picture windows to raised terrace with fabulous views over open countryside.

UTILITY ROOM: 18' 0" x 7' 8" (5.49m x 2.34m) Range of high and low level units, single drainer sink unit, plumbed for washing machine, Beam vacuum system, integrated fridge, ceramic tiled floor.

CLOAKROOM:

SEPARATE WC: Low flush suite, ceramic tiled floor.

GAMES ROOM: 29' 4" x 23' 6" (8.94m x 7.16m) Built-in bar.

STUDY: 10' 8" x 7' 9" (3.25m x 2.36m)

CLOAKROOM: Low flush suite.

SITTING ROOM: 16' 9" x 14' 5" (5.11m x 4.39m) Feature Gazco gas fire. Double sliding doors to . . .

SUN ROOM: 14' 7" x 14' 0" (4.44m x 4.27m) Patio door to garden.

## FIRST FLOOR

LANDING: Walk-in shelved hotpress with copper cylinder and immersion heater.

BATHROOM: Sunken jacuzzi bath, pedestal wash hand basin, bidet, low flush wc, corner shower cubicle, part tiled walls, ceramic tiled floor, heated towel rail.

BEDROOM (2): 12' 5" x 8' 4" (3.78m x 2.54m)

BEDROOM (3): 13' 7" x 11' 7" (4.14m x 3.53m)

ENSUITE SHOWER ROOM: Shower cubicle, wash hand basin, low flush wc, ceramic tiled walls, part tiled walls.

PRINCIPAL BEDROOM: 18' 3" x 13' 10" (5.56m x 4.22m)

ENSUITE SHOWER ROOM: Shower cubicle, vanity unit, low flush wc, fully tiled walls, ceramic tiled floor, range of built-in cupboard.

DRESSING ROOM: Range of shelves and rails, built-in cupboards.

BEDROOM (4): 16' 0" x 12' 0" (4.88m x 3.66m) Storage in eaves.

BEDROOM (5): 18' 0" x 17' 6" (5.49m x 5.33m) Built-in robe, dressing table and drawers, window seating.









## OUTSIDE

Laneway to tarmac driveway and parking areas leading to . . .

DOUBLE GARAGE: 24' 0" x 12' 2" (7.32m x 3.71m) Twin up and over doors, light and power.

UTILITY ROOM: Range of units, single drainer stainless steel sink unit. Staircase to . . .

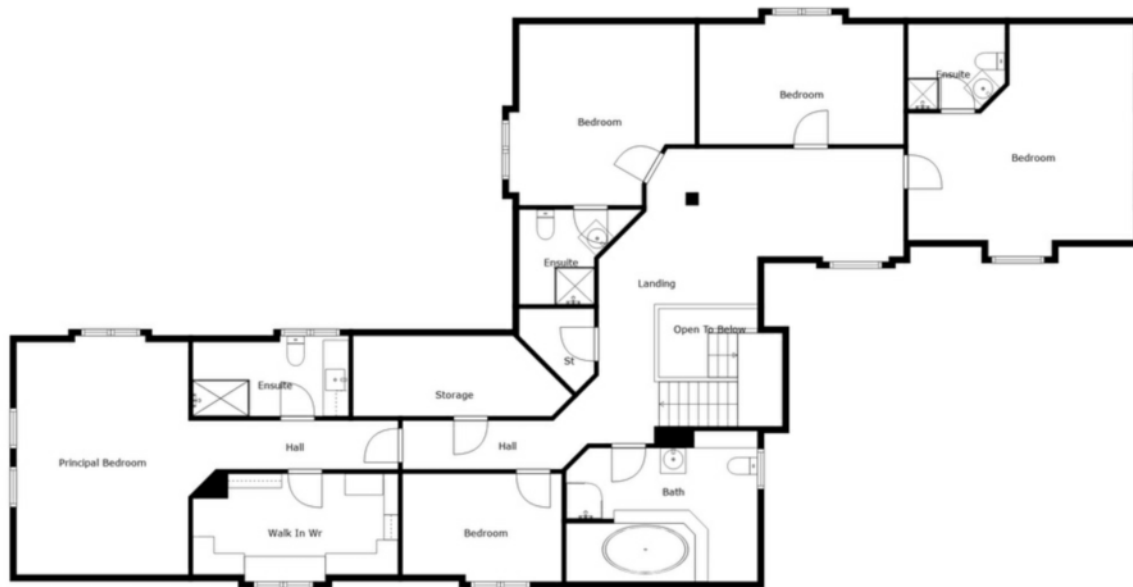
GAMES ROOM: 25' 0" x 13' 0" (7.62m x 3.96m) Tarmac driveway to enclosed forecourt.

Beautifully landscaped gardens laid in lawns, flower beds, trees and shrubs, ornamental fish pond, rockeries and patio areas. 2 stables and tack room. Surrounding fields extending to approximately 13 acres.

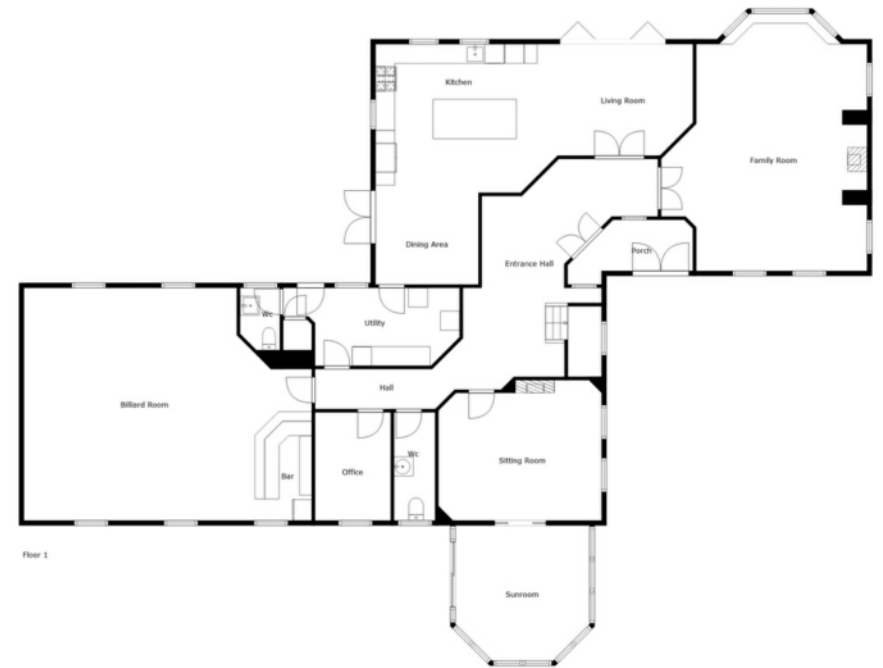








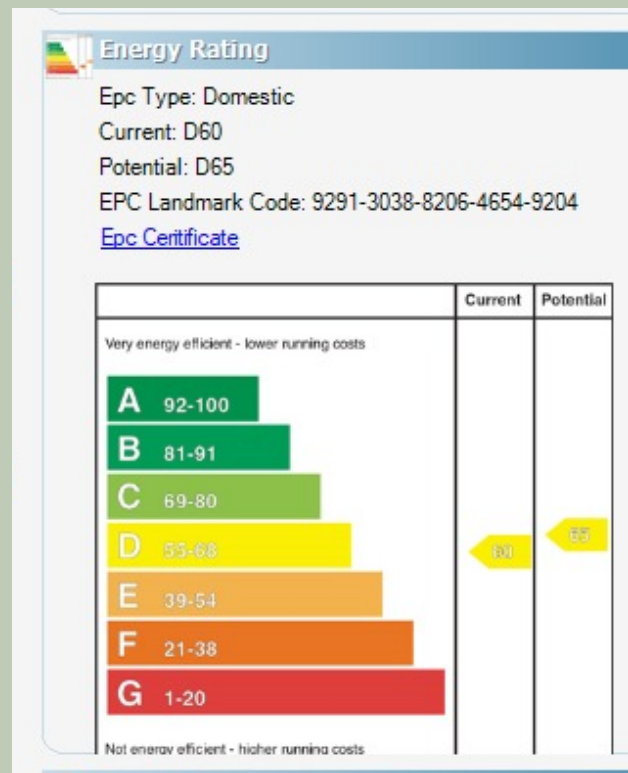
Floor 2



Floor 1

## LOCATION:

Heading from Belfast to Ballygowan go past Moneyreagh and Ballycreely Road is on the left hand side, then turn right onto Tullyhubbert Road and immediately right onto Tower Lane and the property is straight ahead.



North Down - 028 90 42 4747

Lisburn Road - 028 90 66 3030

Ballyhackamore - 028 90 65 0000

Lisburn - 028 92 66 1700

[www.templetonrobinson.com](http://www.templetonrobinson.com)

These particulars do not constitute any part of an offer or contract. None of the statements contained in these particulars are to be relied on as statements or representations of fact and intending purchasers must satisfy themselves by inspection or otherwise to the correctness of each of the statements contained in these particulars. The Vendor does not make or give, neither Templeton Robinson, nor any person in its employment has any authority to make or give, any representation or warranty whatever in relation to this property. All dimensions are taken to nearest 3 inches.